

We invite you to slow down, walk, and notice your neighbourhood.

The key to reading this map is what we call 'civic ecologies', examples of stewardship activities that bring together care for the environment and place. For instance: verge and community gardens, boxes of citrus fruit or herbs shared with neighbours, honey honesty boxes, but also the use of bore water, rain harvesting, rain gardens, and pockets of native plants to create habitat for wildlife.

While you walk, allow some questions into your mind: How do people tend to plants and support wildlife? How do they design for and with plants in their gardens, balconies, and verges? And, conversely, how do plants design our city and generate a sense of place? What kind of knowledge circulates among people who care for plants? How is climate change perceived and experienced in the neighbourhood? What about water, since Green Square was wetlands and water management is key to a sustainable city?

What is your vision for the ecologies of Green Square?

The map invites you to visit some of the civic ecologies of Green Square: they are represented by drawings of details rather than by precise coordinates because civic ecologies are alive, connected and growing. By meandering through the neighbourhood, you may come across more examples. If you add to this map, your examples will be included in an atlas of the project, to be published in 2022.

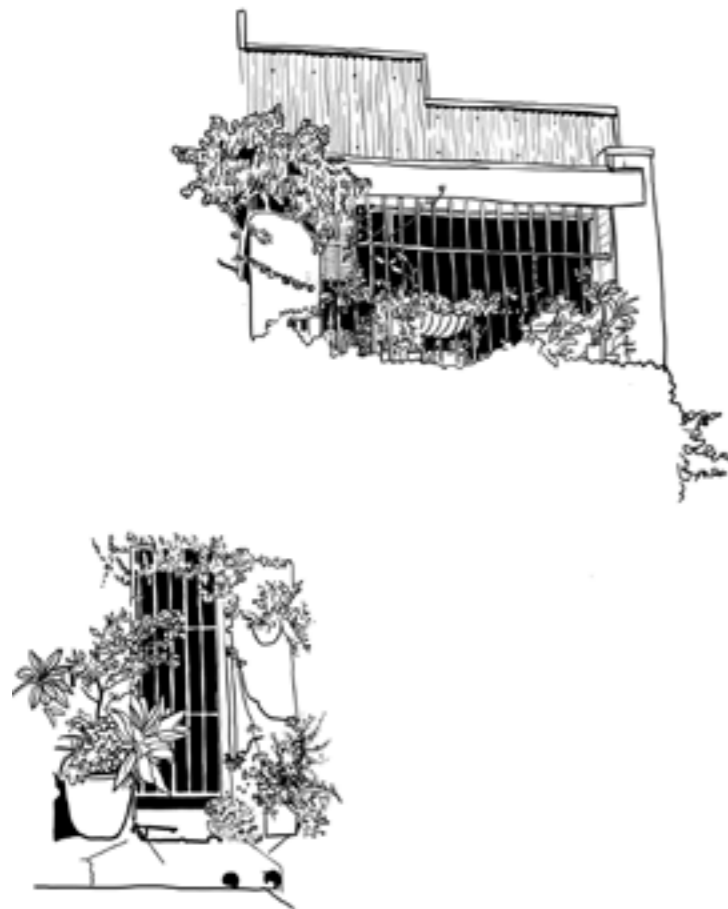
Please send us images of what you discover in your walks (including where), your thoughts, tell us what you learned or observed or just came across. Enjoy your walks.

greensquare@107.org.au

Share on insta and twitter: @mappingedges and #mappingedges @cityofsydney #cityofsydney #greensquare



We acknowledge that these walks are on Aboriginal land—we acknowledge the Gadigal people of the Eora nation as the traditional custodians of these lands . We pay our respects to elders past, present and future, and we extend our respect to all the Aboriginal peoples who have and continue to care for this Country.



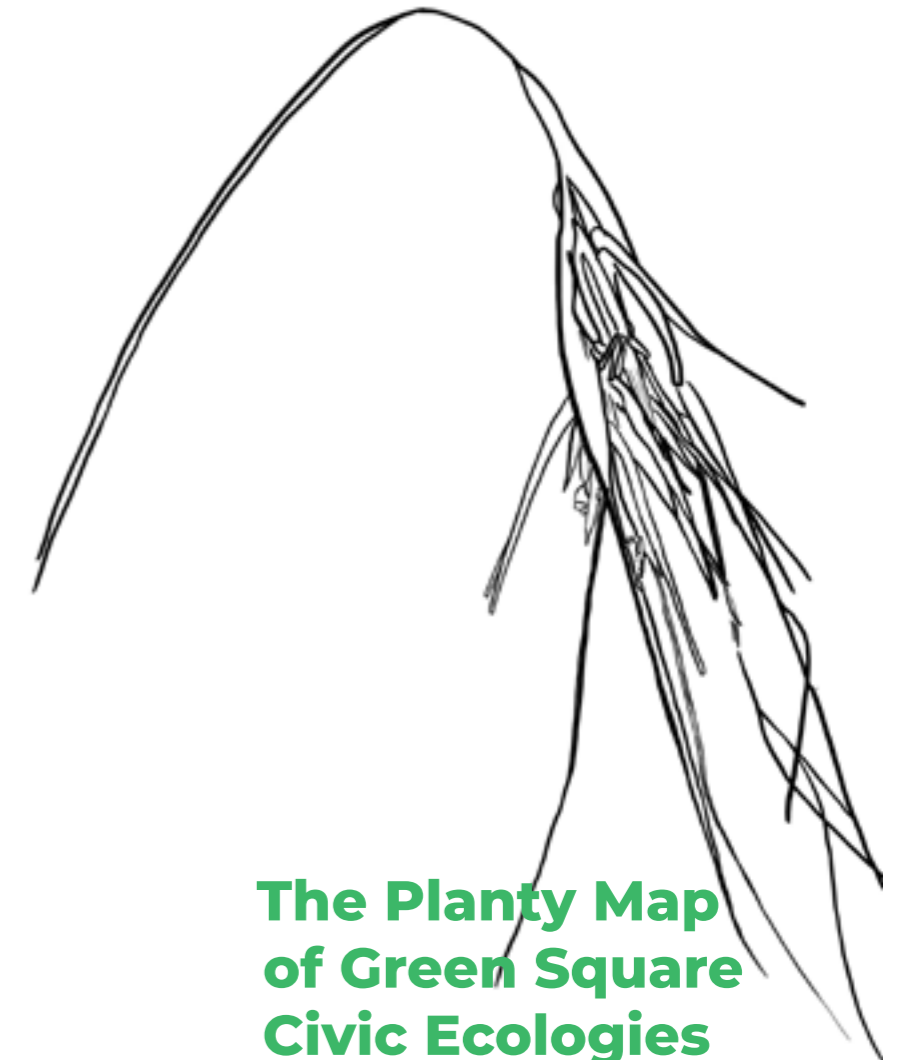
Mapping Edges Research Studio:  
Alexandra Crosby, Ilaria Vanni and  
Ella Cutler, University of Technology  
Sydney.

This project is supported by the City  
of Sydney and the Climate Justice  
Research Centre, University of  
Technology Sydney.

In Partnership with 107 Projects.

Printed in 2021

This work is licensed under  
creativecommons CC BY-SA



**The Planty Map  
of Green Square  
Civic Ecologies**



# The Planty Map of Green Square Civic Ecologies

- A.** Kangaroo Grass, Botany Rd
- B.** Maria Fernanda Cardoso, Where / Live / Will Grow, Portman St
- C.** Joynton Avenue Creative Centre, Joynton Avenue
- D.** Auntie Julie Freeman and Jonathan Jones, Bangala, Cunyama
- E.** Green Square Grower Community Garden, Joynton Park
- F.** Joynton Park
- G.** Green Square Growers Community Garden, Tote Park
- H.** Native Violets, Elizabeth St
- I.** Verge, Portman St
- J.** Wind Energy, Portman St
- K.** Geraniums Verge, Hansard St
- L.** Pumpkin Patch, Victoria St
- M.** OZHarvest Garden, Maddox St
- N.** Verge Gardens, Princess Av and Salisbury Ln
- O.** Olive and Mango Trees, Morley Av
- P.** Rosebery Honey Frog Pond

